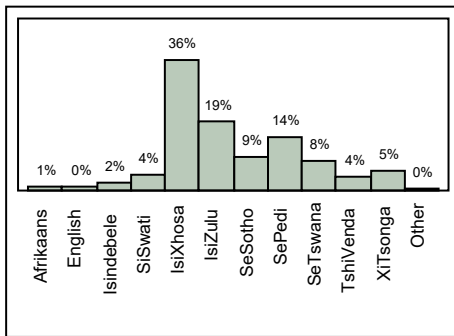


Distributions LEARNER'S MOTHER TONGUE



Frequencies

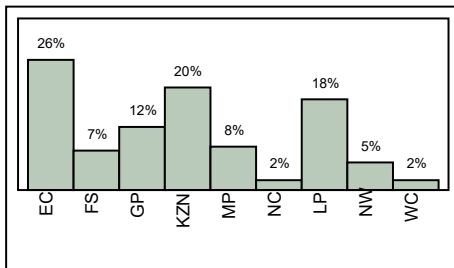
Level	Count	Prob
Afrikaans	3573	0.00651
English	1907	0.00347
Isindebele	8679	0.01581
SiSwati	20560	0.03744
IsiXhosa	196356	0.35759
IsiZulu	102661	0.18696
SeSotho	46984	0.08556
SePedi	78581	0.14311
SeTswana	41239	0.07510
TshiVenda	19250	0.03506
XiTsonga	28438	0.05179
Other	879	0.00160
Total	549107	1.00000

N Missing

17083

12 Levels

PROVINCE



Frequencies

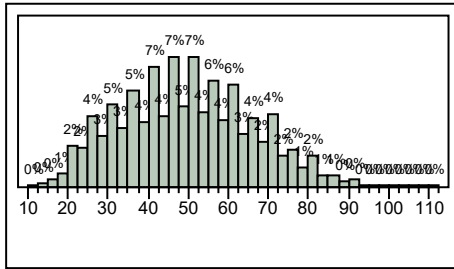
Level	Count	Prob
EC	145229	0.25794
FS	42131	0.07483
GP	68339	0.12138
KZN	113557	0.20169
MP	46218	0.08209
NC	9008	0.01600
LP	99585	0.17688
NW	29391	0.05220
WC	9566	0.01699
Total	563024	1.00000

N Missing

3166

9 Levels

AGE IN YEARS



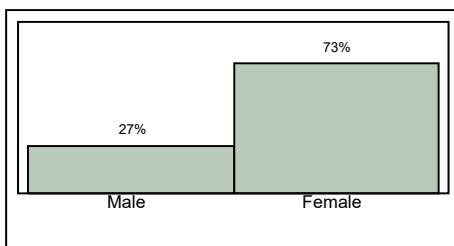
Quantiles

100.0%	maximum	112
99.5%		89
97.5%		81
90.0%		71
75.0%	quartile	60
50.0%	median	49
25.0%	quartile	37
10.0%		28
2.5%		21
0.5%		18
0.0%	minimum	11

Moments

Mean	49.225811
Std Dev	16.001391
Std Err Mean	0.0222537
Upper 95% Mean	49.269428
Lower 95% Mean	49.182195
N	517025
Sum Wgt	517025
Sum	25450975
Variance	256.04451
Skewness	0.1874943
Kurtosis	-0.561223
CV	32.506099
N Missing	49165

GENDER

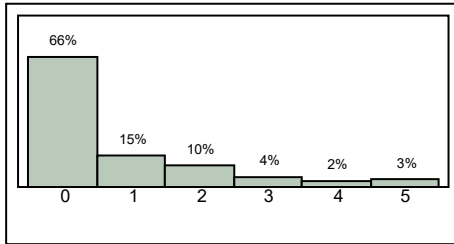


Frequencies

Level	Count	Prob
Male	128629	0.26503
Female	356703	0.73497
Total	485332	1.00000

N Missing
80858
2 Levels

ATTENDED CLASS



Frequencies

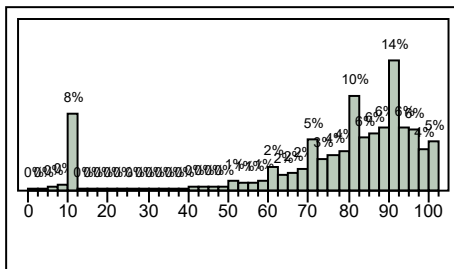
Level	Count	Prob
0	338627	0.65635
1	78398	0.15196
2	52493	0.10175
3	20610	0.03995
4	11558	0.02240
5	14238	0.02760
Total	515924	1.00000

N Missing

50266

6 Levels

LANGUAGE %



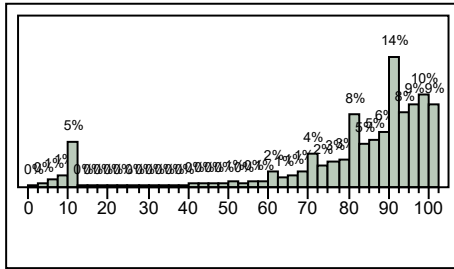
Quantiles

100.0%	maximum	100
99.5%		100
97.5%		100
90.0%		96
75.0%	quartile	92
50.0%	median	84
25.0%	quartile	72
10.0%		48
2.5%		10
0.5%		8
0.0%	minimum	0.4

Moments

Mean	76.847942
Std Dev	24.08809
Std Err Mean	0.0322662
Upper 95% Mean	76.911183
Lower 95% Mean	76.784701
N	557326
Sum Wgt	557326
Sum	42829356
Variance	580.23608
Skewness	-1.844083
Kurtosis	2.6277396
CV	31.345133
N Missing	8864

NUMERICAL %



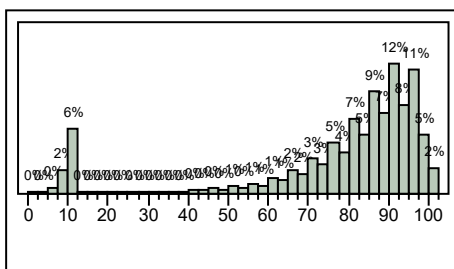
Quantiles

100.0%	maximum	100
99.5%		100
97.5%		100
90.0%		98
75.0%	quartile	96
50.0%	median	90
25.0%	quartile	78
10.0%		60
2.5%		10
0.5%		6
0.0%	minimum	0.6

Moments

Mean	81.755486
Std Dev	22.732498
Std Err Mean	0.0307868
Upper 95% Mean	81.815827
Lower 95% Mean	81.695145
N	545212
Sum Wgt	545212
Sum	44574072
Variance	516.76648
Skewness	-2.235465
Kurtosis	4.4683703
CV	27.805471
N Missing	20978

TOTAL %



Quantiles

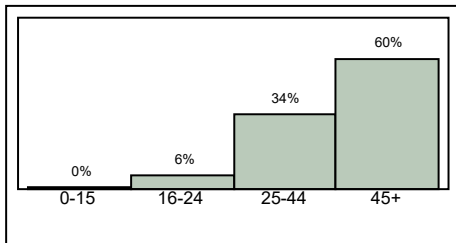
100.0%	maximum	100
99.5%		100
97.5%		99
90.0%		97
75.0%	quartile	93
50.0%	median	86
25.0%	quartile	76
10.0%		52
2.5%		9
0.5%		7

0.0% minimum 1

Moments

Mean 78.589521
 Std Dev 23.752939
 Std Err Mean 0.0317371
 Upper 95% Mean 78.651724
 Lower 95% Mean 78.527317
 N 560145
 Sum Wgt 560145
 Sum 44021527
 Variance 564.20213
 Skewness -2.033834
 Kurtosis 3.3072142
 CV 30.224054
 N Missing 6045

AGE CAT

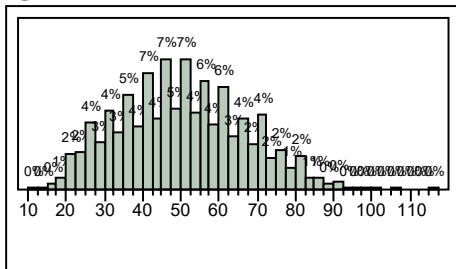


Frequencies

Level	Count	Prob
0-15	518	0.00100
16-24	28600	0.05532
25-44	176961	0.34227
45+	310946	0.60141
Total	517025	1.00000

N Missing 49165
 4 Levels

age3



Quantiles

100.0%	maximum	117
99.5%		90
97.5%		81
90.0%		71
75.0%	quartile	61
50.0%	median	49
25.0%	quartile	38
10.0%		28
2.5%		22
0.5%		18
0.0%	minimum	11

Moments

Mean	49.813622
Std Dev	15.881499
Std Err Mean	0.022779
Upper 95% Mean	49.858268
Lower 95% Mean	49.768976
N	486087
Sum Wgt	486087
Sum	24213754
Variance	252.22202
Skewness	0.1784382
Kurtosis	-0.563044
CV	31.88184
N Missing	80103